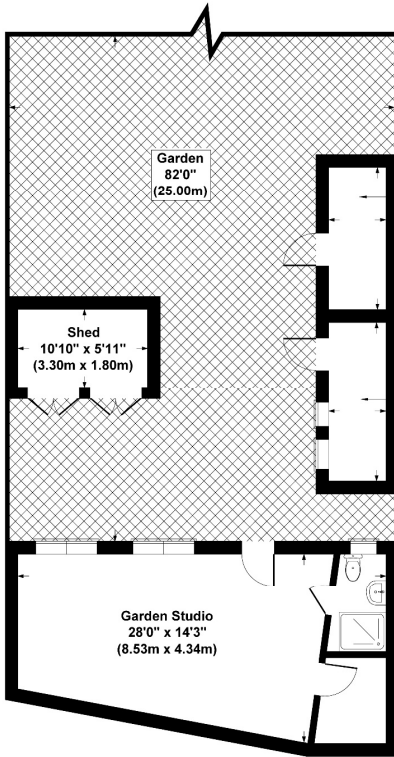


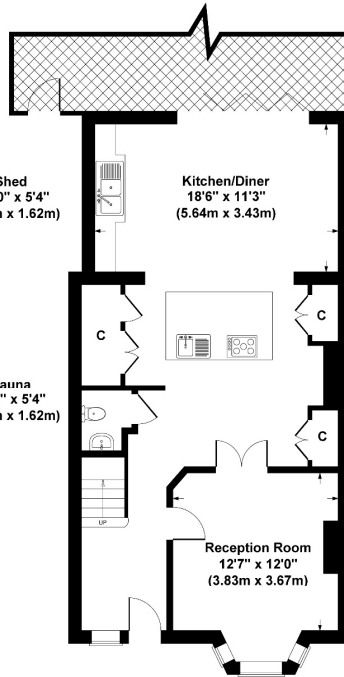
Orchard Avenue, Whetstone, N20

Asking Price: £1,100,000 *Freehold*

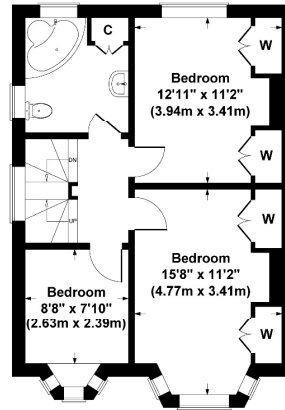
We are delighted to present this beautifully extended Edwardian family home, brimming with charm and character. Ideal for both growing and established families, the property offers generous living space and includes a separate detached garden studio—complete with its own shower room, WC, and kitchenette—perfect for guests, a home office, or creative space.



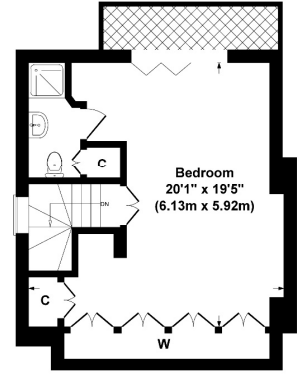
Outbuilding



Ground Floor



First Floor



Second Floor

Orchard Avenue, London, N20
Gross Internal Area
Main House = 1711 sq ft / 159 sq metres
Outbuilding = 517 sq ft / 48 sq metres
Total = 2228 sq ft / 207 sq metres
Not to Scale. Produced by The Plan Portal 2024
For Illustrative Purposes Only.

Charges

Council Tax Band: E

Energy Efficiency Rating

	Current	Potential
Very energy efficient - lower running costs		
(92+) A		
(81-91) B		
(69-80) C		
(55-68) D		
(39-54) E		
(21-38) F		
(1-20) G		
Not energy efficient - higher running costs		
	69	82
England, Scotland & Wales	EU Directive 2002/91/EC	

Compass Residential - Watford

First Floor
77-79 High Street
Watford
Hertfordshire
WD17 2DJ

T: 0203 903 6660

E: markn@compassresidential.co.uk

www.compassresidential.co.uk

Compass Residential Limited Registered in England 10659033 Registered Office: 28 Church Road, Stanmore, Middlesex, HA7 4XR

Disclaimer

Every attempt has been made to ensure accuracy, however these property particulars are approximate and for illustrative purposes only. They have been prepared in good faith and they are not intended to constitute part of an offer of contract. We have not carried out a structural survey and the services, appliances and specific fittings have not been tested. All photographs, measurements, floor plans and distances referred to are given as a guide only and should not be relied upon for the purchase of any fixture or fittings. Lease details, service charges and ground rent (where applicable) are given as a guide only and should be checked prior to agreeing a sale.